

This software module is standard supplied with the Lode Excalibur Sport ergometer with Pedal Force Measurement. The combination of software and ergometer results in a unique application for sport-medical stress testing, rehabilitation and research.

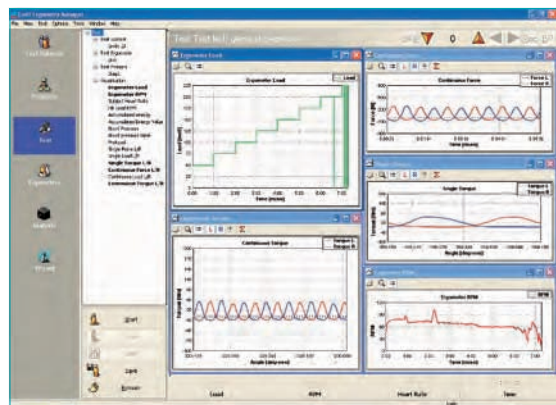
The Pedal Force Measurement module adds the following features to the Lode Ergometry Manager:

- Continuous registration of the forces exerted on the left and right crank.
- Specific Pedal Force Measurement visualizations.
- Specific Pedal Force Measurement reports and analysis: Numeric data such as peak values, averages, absolute maximum, angle, total efficiency, rpm and left/right ratio are registered and saved. Export to statistical programs is possible with the optional LEM Expansion Module Export
- Protocols for pedal force measurement can be programmed based on time intervals (with a maximum of 60 minutes), enabling a continuous registration of the pedal force.
- On-line visualizations of the forces and Torque on exerted on the left and/or right crank during the test.
- The software offers the possibility to define "area's of interest" (AOI) and to analyze these separately.

With the measured values the operator can a.o. advise the test subject better about:

- Injuries;
- Efficiency of the bicycle movement;
- Body posture at the bicycle;
- Left-right comparison;
- Evaluating rehabilitation process;
- Adjustments to the racing bike.

With only one test you get a clear insight into the physiologic and biomechanic possibilities of your client, which enables you to give better advice and support.



PFM visualizations



Define "area of interest"

	Torque [Nm]		Power [Watt]		Total
	Left	Right	Left	Right	Total
Average:	9.22	8.86	44.22	43.68	129.81
Average Maximum:	47.73	42.58	296.52	305.79	
at angle [deg]:	93	264	93	269	
Average Minimum:	-9.89	-10.01	-71.01	-71.92	
Peak:	44.05	47.87	322.97	344.75	
at angle [deg]:	93	264	93	264	
at time [sec]:	182.86	183.29	182.86	183.29	
Efficiency (%):	74.27				
Ratio LR (%):	51.01		49.99		
Average RPM [1/min]:	88.66				
Crank Length [cm]:	170.0		170.0		
Revolutions:	6				
Force angle [deg]:	30645	182446	Force time [sec]:		
To angle [deg]:	92000	187498	To time [sec]:		

Report

Lode B.V.

Zernikepark 16
9747 AN Groningen
The Netherlands

Tel.: 31(0)50 5712811
Fax: 31(0)50 5716746

e-mail: ask@lode.nl
http://www.lode.nl