

SPIROVIT SP-1

Simply Breathtaking

Spirometry made simple and affordable!

The SPIROVIT SP-1 is a unique solution to simplify complex lung function testing. The high resolution patient incentive screen displays real-time flow/volume loops and detailed measurement matrices. The data can be either printed within seconds or transmitted to PC.

Disposable Sensor SP-150

With SCHILLER's unique SP-150 disposable sensors, the risk of cross-contamination is reduced to its minimum. The small, lightweight sensors are low cost and completely disposable. Simply remove, discard and replace the sensor after each patient performance.

No need for sterilization, easy handling and saving time are maximum benefits for both patient and physician!

Reusable Sensor SP-20

SCHILLER's SP-20 reusable sensors are small, lightweight and very easy to clean. The low cost filters provide the most economical method of performing pulmonary function testing.

Features

- FVC, SVC, MVV, MV and pre/post medication tests with choice of predicted normals
- Simple operation
- Internal memory for up to 100 tests (optional)
- Built-in mains and battery operation
- Ready-to-file reports within seconds on 3.5" (90 mm) paper
- Comparison of predicted and actual values
- Automatic interpretation
- Data transmission via built-in RS-232 interface to PC-based data management program SEMA for longterm storage, retrieval and trending
- Everything in one box ... memory, battery, printer, patient incentive screen
- Affordable, fast, reliable, CE labelled



SCHILLER

www.schiller.ch

The Art of Diagnostics

Technical Data SP-1:

Dimensions: 290x210x69 mm, app. 2.9 kg; 11.4 x 8.3 x 2.7 in, app. 6.3 lbs
Power Supply Requirements: 220-240 V, nominal 230 V, 50/60 Hz, or 100-115 V, nominal 115 V, 50/60 Hz; mains independent operation with built-in rechargeable battery and charger unit, LED indication for line or battery operation
Battery Charging Time: 15 hours from a completely discharged battery (<3 hours to 60% capacity)
Battery Capacity: 6 hours of normal use
Power Consumption: max. 28 VA
Storage: Memory for up to 100 tests
Liquid Crystal Display: <ul style="list-style-type: none">- Liquid crystal display for graphic and alphanumeric representation- Resolution: 192x64 dots- Contrast is manually variable via keyboard
Chart Paper: Thermoreactive, Z-folded, width 90 mm/3.6 in, perforation each page
Printing Process: High-resolution thermal printhead, 8 dots/mm
Paper Speed: 25 mm/s
Safety Standards: MDD 93/42/EEC, Annex II; EN 60601-1: 1990; IEC 60601-1-2
Safety Class: BF according to IEC 60601-1
Protection Class: <ul style="list-style-type: none">- I according to IEC 60601-1, CSA 22.2 and UL 2601 (units with internal battery)- IIa according to MDD 93/42/EEC (medical guideline)
Conformity: -0123 according 93/42/EEC
Control Panel and Keyboard: User-friendly Rubber Keys, LED indicators
Environmental Conditions: <ul style="list-style-type: none">- Temperature, operating: 10° to 40° C/50° to 104° F- Temperature, storage: -10° to 50° C/14° to 122° F- Relative Humidity: 25 to 95% (not condensed)- Pressure, operating: 700-1060 hPa
Standard Interfaces: 1 x RS-232 serial interface
SPIROVIT SP-1 Basic Unit: Performs four inspiratory and expiratory pulmonary function tests with choice of predicted normals
Accessories: <ul style="list-style-type: none">- 1 pneumotach sensor (choice of SP-150 disposable or SP-20 reusable sensor)- 1 noseclip- 1 pack of disposable mouthpieces (for SP-150) or filters (for SP-20)- 1 power cable- 1 pack of paper- 1 operating manual
Hardware Options: Transport case, calibration syringe (necessary)
Software Options: <ul style="list-style-type: none">- SEMA PC-Software for validation and archiving of test data on PC- Memory for up to 100 tests
Measured Values: FVC: FVC, FEV _{0.5} , FEV _{1.0} , FEV _{3.0} , FEV _{0.5} /FVC, FEV _{1.0} /FVC, FEV _{3.0} /FVC, FEF _{0.2-1.2} , FEF ₂₅₋₇₅ , FEF ₇₅₋₈₅ , PEF, MEF ₇₅ , MEF _{50%} , MEF _{25%} , FIVC, FIV _{1.0} , FIV _{1.0} /FVC, FIV _{1.0} /FVC, PIF, MIF _{50%} SVC: SVC, ERV, IRV, TV MV: MV, RR, TV MVV: MVV, RR, TV
Prediction Equation: <ul style="list-style-type: none">- Adults: ECCS, Crapo, Morris, Knudson, Knudson 76, Austria, Berglund, Finnish, Indian, Composite, Polgar- Children: Quanier & Tammeling, Austria, India, Knudson, Knudson 76, Polgar- Comparison pre/post medication possible- Extrapolated predicted values
Presentation: <ul style="list-style-type: none">- Flow volume loop- Flow time plot- Measurement values table
Standards Compliance: ATS 94, OSHA, NIOSH
SPIROVIT SP-150 Pneumotach Flowsensor for Pulmonary Function
Testing with Disposable Sensors: Dimensions: 118x36x28 mm, app. 120 g; 4.6x1.4x1.1 in., app. 0.26 lbs Measuring Method: Pneumotachometer
Measuring Ranges: <ul style="list-style-type: none">- Flow: 0 to ±16 l/s- Volume: 0 to ±15 l
Measuring Accuracy: According ATS 1994
Flow Impedance: <0.2 mbar *s/l at 12 l/s
SPIROVIT SP-20 Pneumotach Flowsensor for Pulmonary Function Testing with Reusable Sensor: Dimensions: 125x36x28 mm, app. 160g; 4.9x1.4x1.1 in., app. 0.34lbs Measuring Method, Measuring Ranges, Measuring Accuracy, Flow Impedance same as SP-150
Technical Data are subject to change without notice.

ASIA

SCHILLER Asia-Pacific
10 C Jalan SS 3/33
Taman Universiti
47300 Petaling Jaya
Selangor, Malaysia
Phone +603 7877 5336
Fax +603 7877 5744
schiller@top.net.my

AUSTRIA

SCHILLER Handelsges. m.b.H.
Kampmüllerweg 24
A-4040 Linz
Phone +43 732 70 99
Fax +43 732 757 000
sales@schiller.at

C.I.S. & Russia

SCHILLER AG
Moscow Representative Office
Office 414, 1-st Yamskogo Polya street 15
125124 Moscow, Russia
Phone/Fax:
+7 (095) 970 11 33
+7 (095) 956 29 10
mail@schiller-ag.com
www.schiller-cis.com

FRANCE

SCHILLER MEDICAL SAS
4, rue Louis Pasteur
F-67162 Wissembourg
Phone +33 3 88 63 36 00
Fax +33 3 88 94 12 82
info@schiller.fr

GERMANY

SCHILLER Medizintechnik GmbH
Rudolf-Diesel-Strasse 14
D-85521 Ottobrunn
Phone +49 89 629 9810
Fax +49 89 609 5090
info@schillermed.de

INDIA

SCHILLER Healthcare India Pvt. Ltd.
D.C. Silk Mills Compound
'A' Wing, 1st Floor
5, Chunawala Estate, Kondivitta Lane
Andheri-Kurla Road, Andheri (E)
Mumbai - 400 059, India
Phone +91 22 826 35 20
Fax +91 22 826 35 25
schiller@vsnl.com

SPAIN

SCHILLER ESPAÑA, S.A.
Avenida Baviera, 12 --14 Posterior
E-28028 Madrid
Phone +34 91 713 01 76
Fax +34 91 355 79 33
schiller@schiller-es.com

SWITZERLAND

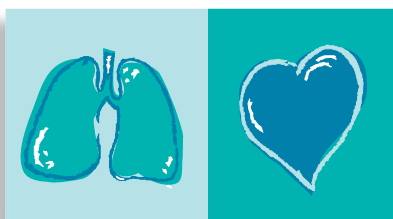
SCHILLER-Reomed AG
Riedstrasse 14
CH-8953 Dietikon
Phone +41 1 744 30 00
Fax +41 1 740 37 10
sales@schiller-reomed.ch

TURKEY

SCHILLER TÜRKİYE
Halil Rifat Pasa Mah.
Darülaceze Cadd.
Perpa Ticaret Merkezi
B/Blok No:41 K:2
Okmeydanı-Sisli - Istanbul
Turkey
Phone +90 212 210 86 81 (pbx)
Fax +90 212 210 86 84
sales@schiller-turkiye.com

USA

SCHILLER America Inc.
11300 NW 41st Street
Miami, Florida 33178, USA
Phone +1 786 845 06 20
Fax +1 786 845 06 02
sales@schilleramerica.com



The Art of Diagnostics

SCHILLER

www.schiller.ch